

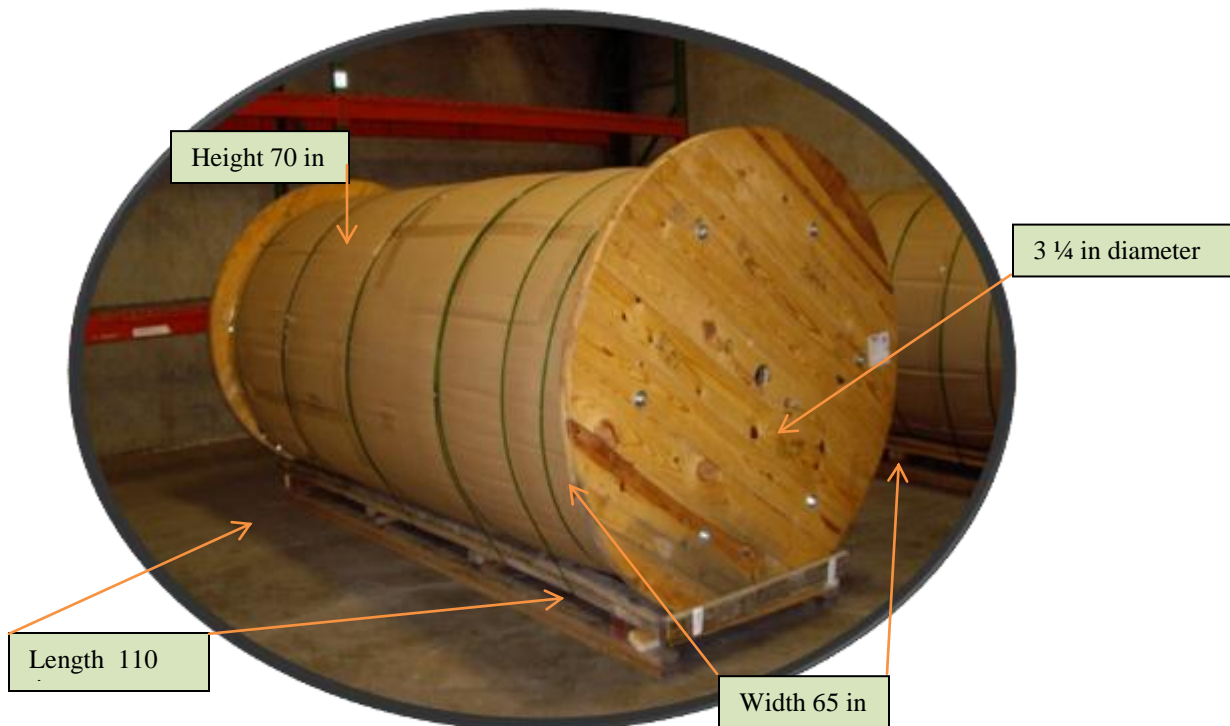
## OPTIX XL Sheet Technical Service Note (3)

### Handling OPTIX XL Reels

This technical note applies to reels of **Lucite XL**, **Lucite SPA** and **Lucite Bath** continuous cast acrylic

#### Product Offering

Thickness	Width (inch)	Length (feet)	Length (inch)	Net Weight (lbs.)	Square feet
0.125	100	700	8400	4,439	5,833
0.135	100	650	7800	4,723	5,416
0.187	100	467	5600	4,500	3,888



## Moving reels

*Gross Weight 5,000 lbs.*



## Lifting by hoist



## On reel stand



## Reel on transportable “A” frame trolley stand



2 ½ in holes 8in from center

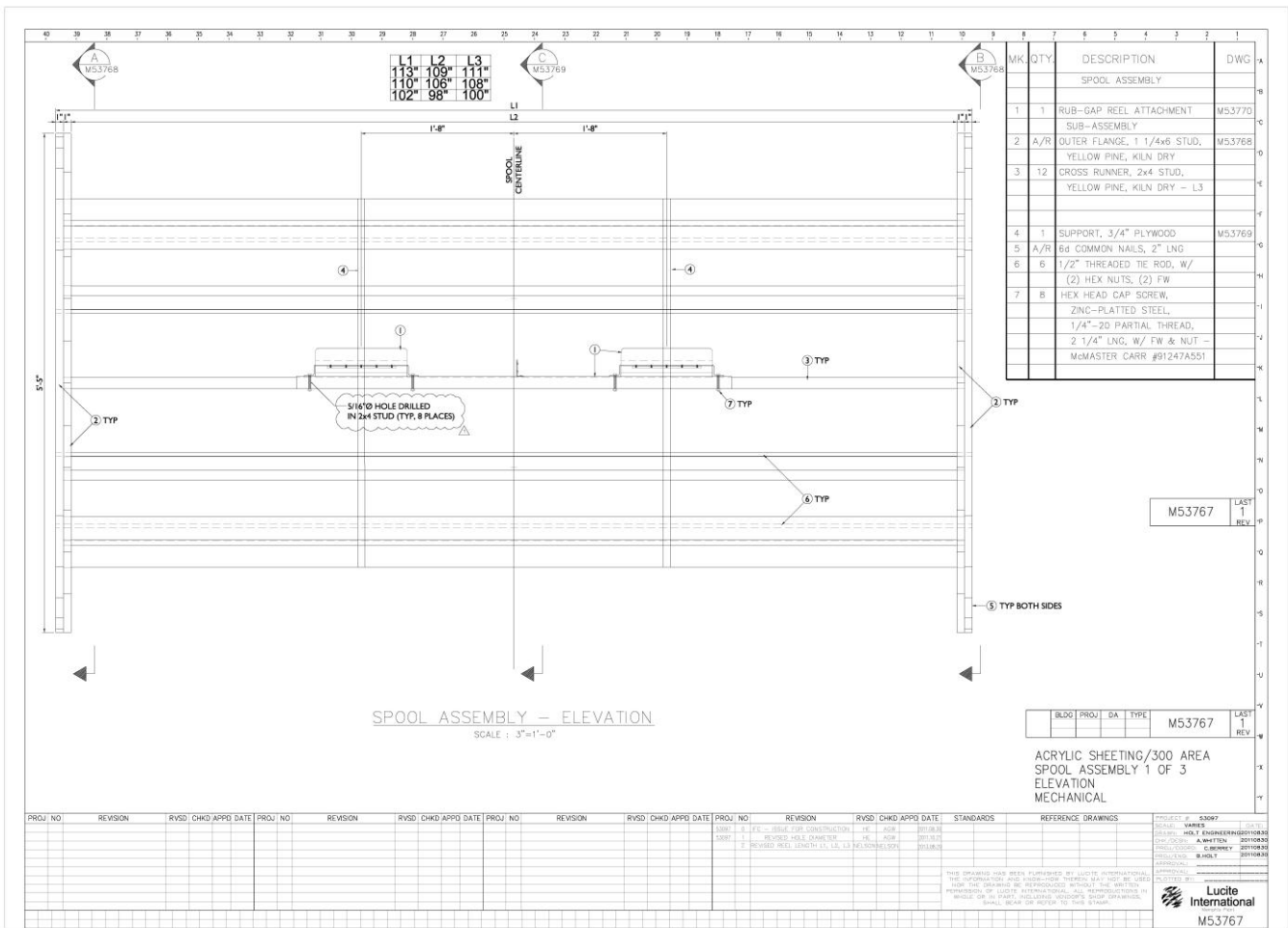
## Handling / Cutting

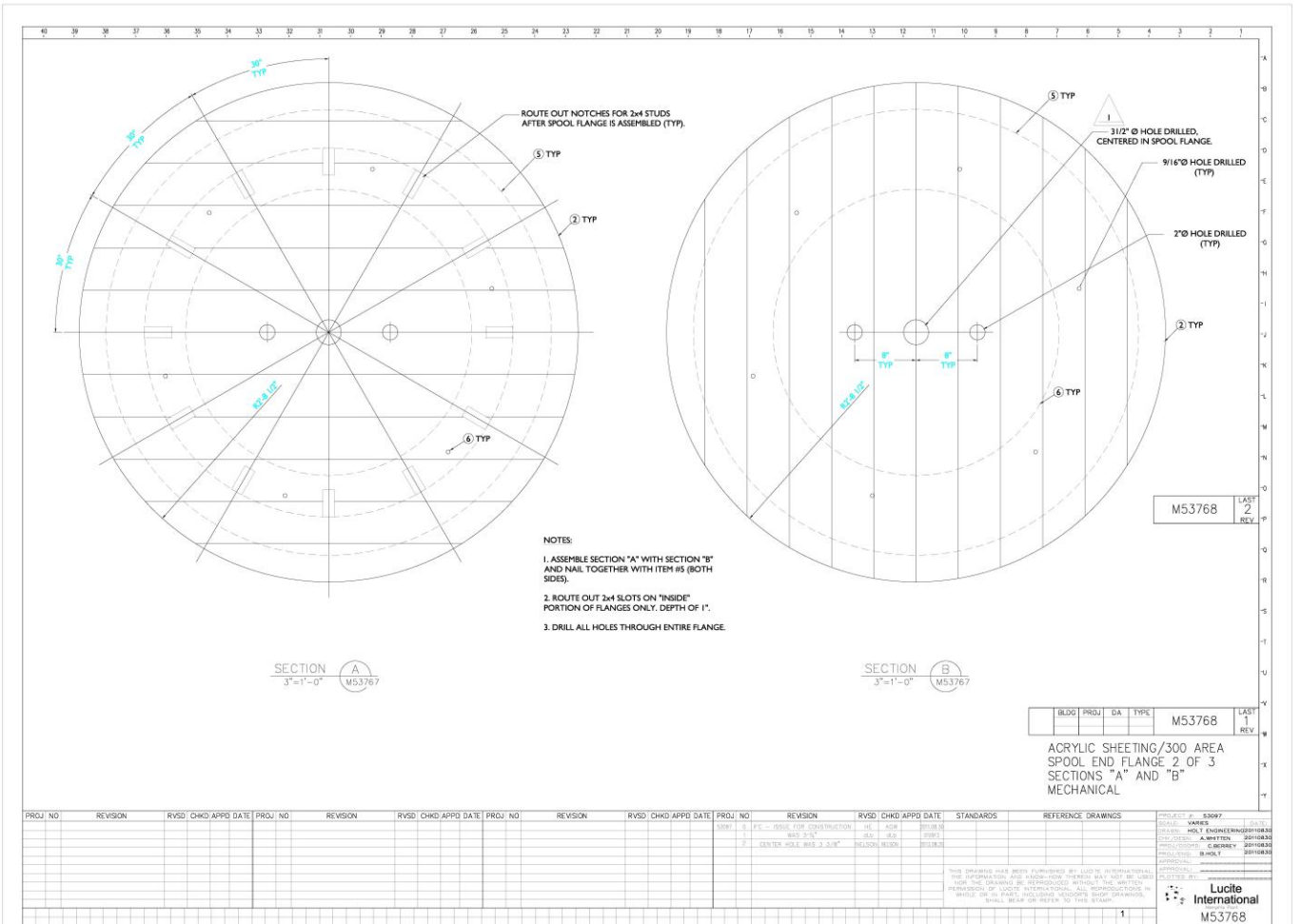
- Keep the reel in the original aluminum over wrap film before use.
- Do not store outdoors.
- The reel must be transferred from the cradle pallet used in transport to a reel stand.
- Fork lift truck, hoist or pallet truck can be used.
- Use a 3 in diameter steel mandrel to support the reel on the reel stand.
- 2 ½ in diameter holes are provided 8 from center if a mechanical un- wind drive is used.
- The sheet is relatively easy to un wind by hand. Take care not to un wind to fast.
- Carbide tipped circular saws are recommended.
- Standard circular saw used to cut flat sheet can be used.
- It's worth looking at the Mafell PSS 3100 e panel saw with saw dust extraction.
- A portable vacuum cleaner, such as 'Shop Vac® is strongly recommended to clean up saw dust.
- Always cut length of sheet first.
- Sheet must be clamped on “reel” side before cutting.
- The cutting table should be covered with clean protective felt to minimize scratching.
- Scribe cutting is NOT recommended.
- Take extra care when cutting the sheet in the machine direction (when reducing the sheet width). During storage the sheet will have gained stress not normally found with flat sheets.
- Handle the cut sheet before thermoforming with extra care as it will have internal stress.
- Use a large portable ‘A’ frame to take the sheet to the forming area.

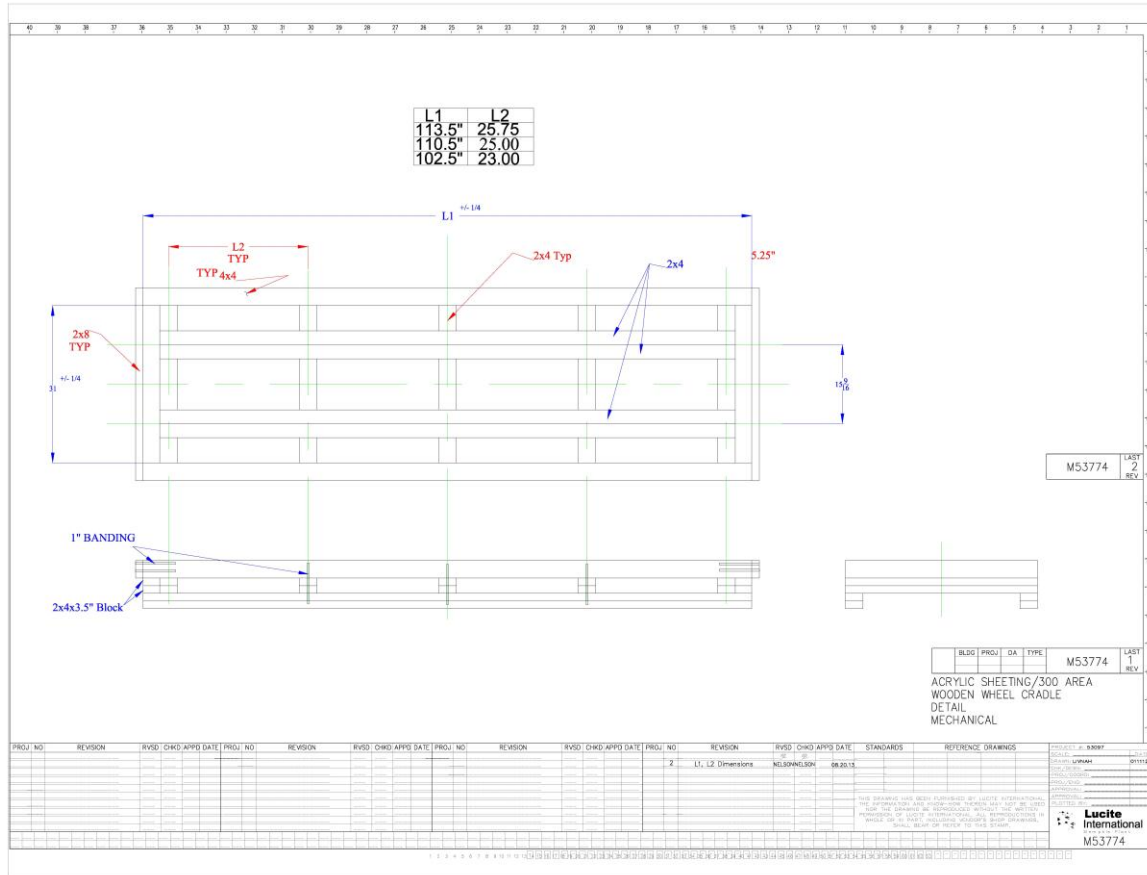
Sizes of reels and cradles (Inches)

Sheet	Cradle	Reel	Reel
width	Outside length	Outside length	Inside length
90	106.5	102	98
100	114.5	110	106
102	117.5	113	109

Engineering drawings of wood reel and cradle







For further information, call Plaskolite at 800.458.2483 and ask for Lucite® XL or OPTIX XL Technical Service.

Lucite® is a registered trade mark of Lucite International Inc.

The information and recommendations in this publication are, to the best of our knowledge, reliable. Users should make their own tests to determine the suitability of these products for their own particular purpose.

Lucite International Inc. MAKES NO WARRANTY OF ANY KIND, EXPRESSED OR IMPLIED, INCLUDING THOSE OF MERCHANTABILITY OR FITNESS FOR A PARTICULAR PURPOSE, other than that the material conforms to its applicable current Standard Specifications. Statements, herein, therefore, should not be construed as representations or warranties. The responsibility of Lucite International Inc. for claims arising out of breach of warranty, negligence, strict liability, or otherwise is limited to the purchase price of the material.